

SUPREME ▲VIATION INC

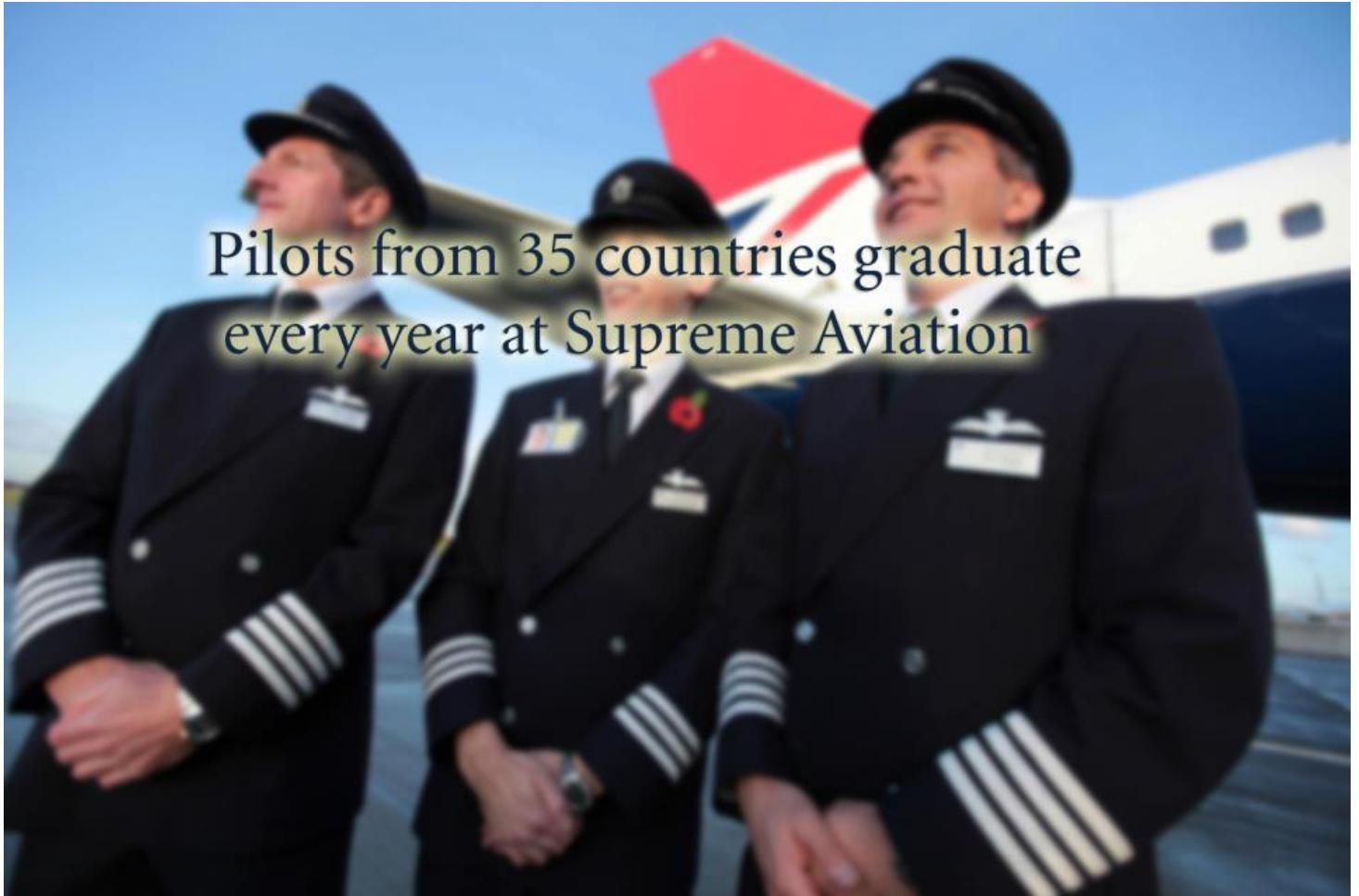
Sangeeta Aviation Services Pvt Ltd enterprise



5B 34 Mittal Estate MV Road Andheri E Mumbai 59 **INDIA** +91 9870811224
Potomac Airfield KVKX Fort Washington MD 20744 **USA** +1 214 696 4437
Supreme Center Natakhtari Airport TBILISI **GEORGIA** +995 57 448 2121
Av Macaronesia Achada Grande Frente Praia **CAPE VERDE** +238 9919 778
www.supremeaviation.com ammeet@supremeaviation.com



PROFESSIONAL PILOT PROGRAM



Pilots from 35 countries graduate every year at Supreme Aviation

FOR INTERNATIONAL STUDENTS

#	Index	Page#
1.	Enrollment Process & Instructions	2-5
2.	Enrollment Form/ Student Application	6
3.	CPL Fees & information	7-8
4.	CPL Course information	9
5.	Fee Structure	10

From Where Dreams Take Off...



SUPREME AVIATION INC

Sangeeta Aviation Services Pvt Ltd enterprise



5B 34 Mittal Estate MV Road Andheri E Mumbai 59 **INDIA** +91 9870811224
Potomac Airfield KVKX Fort Washington MD 20744 **USA** +1 214 696 4437
Supreme Center Natakhtari Airport TBILISI **GEORGIA** +995 57 448 2121
Av Macaronesia Achada Grande Frente Praia **CAPE VERDE** +238 9919 778
www.supremeaviation.com ammeet@supremeaviation.com

ENROLLMENT PROCESS & INFORMATION

1. Please send the completed enrollment form by email or fax to info@supremeaviation.com / +1.301.248.5720
2. Please scan & email or fax the following documents:
 - a. Passport front page and last page
 - b. Highest Obtained Education Certificate
 - c. Proof of finance showing arrangement of training funds



3. Please transfer \$250 non refundable processing fee to our bank account, or email us if you wish to pay by credit/debit card:

Supreme Aviation Inc

Wells Fargo Bank

15216 Montfort Drive, Dallas TX 75248

A/C# 3087547802

ABA# 111-900-659



4. Once we receive all of the above, we will issue your I-20 (USA) / **Admission Confirmation (for Georgia & Cape Verde)** and send it to your address immediately.



From Where Dreams Take Off...

SUPREME AVIATION INC

Sangeeta Aviation Services Pvt Ltd enterprise



5B 34 Mittal Estate MV Road Andheri E Mumbai 59 **INDIA** +91 9870811224
Potomac Airfield KVKX Fort Washington MD 20744 **USA** +1 214 696 4437
Supreme Center Natakhtari Airport TBILISI **GEORGIA** +995 57 448 2121
Av Macaronesia Achada Grande Frente Praia **CAPE VERDE** +238 9919 778
www.supremeaviation.com ammeet@supremeaviation.com



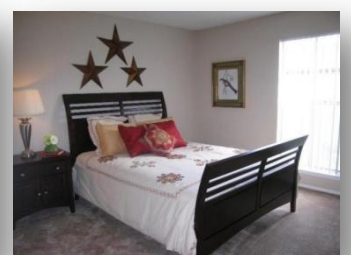
- You are required to pay \$200 SEVIS fee on www.fmjfee.com & get the online receipt, before you apply for your M1 visa with our I-20. You can wire \$200 with the initial \$250 to us if you wish & we will send your SEVIS receipt with your I-20 and admission letter. **For Georgia and Cape Verde location, no fee required.**
- Please submit a 'New Training Application' with TSA on www.flightschoolcandidates.gov and get your fingerprinting instructions prior to your visa interview. Please follow instructions.
- Schedule a M1-Visa interview at the nearest American Consulate to you. **Please get in touch with us before your interview if you need personal counseling for your Visa interview.**



- Once you are granted the M1-Visa, please book your air tickets to **Washington Dulles International Airport in USA.**
Tbilisi International Airport for Georgia.
Praia or SAL international Airport for Cape Verde.



- Please inform us about your arrival dates as soon as your visa is granted and your tickets are booked. **We shall arrange for a complimentary pick up service from the airport.**
- Please let us know if you would like to sublease the apartment for your training duration. We shall let you know about the availability with the pricing. Usually shared accommodation for \$2400 for 7 months is available with our students. Please email us if you have any special request.



From Where Dreams Take Off...

SUPREME ▲ VIATION INC

Sangeeta Aviation Services Pvt Ltd enterprise

5B 34 Mittal Estate MV Road Andheri E Mumbai 59 **INDIA** +91 9870811224
Potomac Airfield KVKX Fort Washington MD 20744 **USA** +1 214 696 4437
Supreme Center Natakhtari Airport TBILISI **GEORGIA** +995 57 448 2121
Av Macaronesia Achada Grande Frente Praia **CAPE VERDE** +238 9919 778
www.supremeaviation.com ammeet@supremeaviation.com



11. If you choose to book one of our available apartments, you are requested to transfer \$2400 or other special rent completely in advance along with \$900 refundable deposit.
12. **Upon your arrival you shall be transferred to our apartments. We recommend you to rest for the evening.**
13. You will be required to pay the balance \$750 processing fee to complete the required documentation and proceed. You can pay for your training in different options:
 - a. By credit/debit card, check/other after every transaction with us
 - b. By transferring a lump sum of \$8000 every month for 4 months
 - c. By transferring complete training fee if enrolled for 6 month CPL



14. You shall complete the FAA/CAA documentation including enrollment process, Orientation, Safety Procedures & Practices (SPP), Training Course Outlines (TCO) and others. You shall appear for your FAA/CAA Medical test with appropriate Examiner as per appointment.



15. You shall complete the fingerprinting process & others for TSA as well as immigration and your arrival on our M1 visa in USA. Please bring your passport with visa, I-94, I-20 and other documents. **Documentation procedure exists for Georgia and Cape Verde location as well.**

From Where Dreams Take Off...

SUPREME ▲ VIATION INC

Sangeeta Aviation Services Pvt Ltd enterprise



5B 34 Mittal Estate MV Road Andheri E Mumbai 59 **INDIA** +91 9870811224
Potomac Airfield KVKX Fort Washington MD 20744 **USA** +1 214 696 4437
Supreme Center Natakhtari Airport TBILISI **GEORGIA** +995 57 448 2121
Av Macaronesia Achada Grande Frente Praia **CAPE VERDE** +238 9919 778
www.supremeaviation.com ammeet@supremeaviation.com



16. As soon as you are approved by the TSA, you shall begin your first training flight with us. Your instructor shall be appointed and you shall plan a training schedule with your aircrafts & instructor.



17. You shall complete your Private Pilot's Certificate followed by Instrument Rating and then Commercial Pilot's Certificate or as required.
18. Training for **Private Pilot's Certificate** shall take approximately 2 months of total time. During such training you shall complete approximately 50 hours of flight time.
19. Training for **Instrument Rating** shall take approximately 2 months of total time. During such training you shall complete approximately 50 hours of more flight time.
20. Training towards **Commercial Pilot's Certificate**, including building up experience takes approximately 1 month of total time. During such **building up experience phase**, you shall fly to various destinations across the USA, with pilots from different ethnicities, with flights at late hours, etc. You shall complete approximately 100 hours of more flight time.
21. If you are pursuing Multi Engine rating, you shall complete that course in about 1 month, flying approximately 20 hours total Multi Engine time.
22. **Upon completion of all the above training with obtaining of certificates, you shall be eligible to apply for a position of a First officer with leading airlines of the world.**
23. Please feel free to email us if you have any questions. We look forward to work with you on your flight training & have a pleasant experience with **Supreme Aviation** in the **United States of America** or **GEORGIA** or **CAPE VERDE!!**

From Where Dreams Take Off...



SUPREME ▲ VIATION INC

Sangeeta Aviation Services Pvt Ltd enterprise



5B 34 Mittal Estate MV Road Andheri E Mumbai 59 **INDIA** +91 9870811224
Potomac Airfield KVKX Fort Washington MD 20744 **USA** +1 214 696 4437
Supreme Center Natakhtari Airport TBILISI **GEORGIA** +995 57 448 2121
Av Macaronesia Achada Grande Frente Praia **CAPE VERDE** +238 9919 778
www.supremeaviation.com ammeet@supremeaviation.com

ENROLLMENT FORM

First Name _____

Middle Name _____

Last Name _____

Age _____ Date of Birth (mm/dd/yyyy) _____

City of Birth _____

Country of Birth _____

Country of Citizenship _____

Current Address
Apartment Number _____

Street Address _____

Street Address _____

Locality _____

City _____ State _____

Country _____

Telephone Number _____

Email Id _____

Please email the form to info@supremeaviation.com or fax it to +1.301.248.5720
As soon as we receive the form we shall get in touch with you.

From Where Dreams Take Off...



SUPREME AVIATION INC



Sangeeta Aviation Services Pvt Ltd enterprise

5B 34 Mittal Estate MV Road Andheri E Mumbai 59 **INDIA** +91 9870811224
 Potomac Airfield KVKX Fort Washington MD 20744 **USA** +1 214 696 4437
 Supreme Center Natakhtari Airport TBILISI **GEORGIA** +995 57 448 2121
 Av Macaronesia Achada Grande Frente Praia **CAPE VERDE** +238 9919 778
www.supremeaviation.com ammeet@supremeaviation.com

Professional Pilot Program I

Syllabus as per 14 Code of Federal Regulations Part 141 Requirements

Training according to 14 Code of Federal Regulations Part 141 & 61 Requirements

- **255 hours** total flight time - Cessna 172S G1000, DA 20 C1 and Piper Seneca
- Private Pilot, Airplane Single Engine Land, Night Rating
- Instrument Rating, Airplane Single Engine Land/ Multi Engine Land
- Commercial Pilot, Airplane Multi-Engine Land / Instrument



	Hours	Price / Hour	Total
Cessna 172 SP Garmin 1000 (Private Pilot)	50	\$150	\$7500
Cessna 172 SP Garmin 1000 (Instrument Rating)	40	\$150	\$6000
Diamond 20 C1 Eclipse (CRM Hours Build Up)	145	\$55	\$7975
Piper Seneca (CPL Multi Engine Land)	20	\$250	\$5000
Private Pilot Instruction	40	\$50	\$2000
Instrument Instruction	40	\$50	\$2000
Commercial Pilot Instruction	30	\$50	\$1500
Cessna Private Pilot Kit (CBI)1		\$399	\$399
Cessna Instrument Pilot Kit (CBI)2		\$399	\$399
Cessna Commercial Pilot Kit (CBI)3		\$399	\$399
Cessna Commercial Multi-Engine Pilot Kit (CBI)4		\$199	\$199
Piper Seneca & Cessna Aircraft Information Manual	1	\$99.75	\$99.75
Communications Headset		\$99	\$107.25
FAA/CAA Flight Medical Certificate		\$100	\$100
FAA/CAA Written Exam (Private, Instrument, Commercial)	3	\$150	\$450
Cessna 172SP G1000 (Private Rating Check Ride)	1.5	\$150	\$275
Cessna 172SP G1000 (Instrument Rating Check Ride)	1.5	\$150	\$275
Piper Seneca (Commercial MEL Rating Check Ride)	2	\$250	\$500
FAA/CAA Examiner Fee (Private, Instrument, MEL Commercial)	3	\$400	\$1200
Other Accessories (FARAIM, Kneeboard, Charts, etc.)			\$121
		Total Cost	\$36499

From Where Dreams Take Off...

SUPREME AVIATION INC

Sangeeta Aviation Services Pvt Ltd enterprise



5B 34 Mittal Estate MV Road Andheri E Mumbai 59 **INDIA** +91 9870811224
Potomac Airfield KVKX Fort Washington MD 20744 **USA** +1 214 696 4437
Supreme Center Natakhtari Airport TBILISI **GEORGIA** +995 57 448 2121
Av Macaronesia Achada Grande Frente Praia **CAPE VERDE** +238 9919 778
www.supremeaviation.com ammeet@supremeaviation.com



- * **Includes all Applicable sales taxes and fuel surcharges.**
- * **Includes Medical fees, examiner fees, TSA fees and all other necessary charges.**
- * **Includes all expenses required. Any additional flight hours or instruction will generate extra costs.**
- * **Prices are subject to change without any prior notice.**
- * **TSA finger printing charges differ from time to time. You will be notified during processing.**

1. Includes – Student Private Pilot CD-ROM Set (26 CD-ROMs with binder), 640 Page Private Pilot Handbook, Private Pilot Syllabus, E6B Flight Computer and Plotter, C172S Manual, Cessna Pilot Logbook, FAR/AIM CD-ROM, Private Pilot PTS Booklet, Exam Review, Graduation Certificate, Blue Kit Bag



2. Includes – Student Instrument Rating CD-ROM Set (29 CD-ROMs with binder), 760 pages Instrument Rating Handbook, Instrument Rating Syllabus, IFR Flight Organizer, Computerized Exam Review, FAR/AIM CD-ROM, Instrument Rating PTS Booklet, Graduation Certificate, Black Kit Bag.



3. Includes – Student Commercial Rating CD-ROM Set (30 CD-ROMs with binder), Commercial Maneuvers Handbook, Commercial Pilot Syllabus, FAR/AIM CD-ROM, Commercial Pilot PTS Booklet, Graduation Certificate, Magenta Kit Bag.



4. Includes – Student Commercial Multi Rating CD-ROM Set (6 CD-ROMs with binder), Commercial Multi Engine Pilot Syllabus, FAR/AIM CD-ROM, Commercial Multi-Engine Pilot PTS Booklet, Graduation Certificate, Flying the Citation DVD, Practical Risk Management.

PREREQUISITES:

For Obtaining FAA Licenses and training:

- No previous experience required.
- Obtain a 2nd Class FAA Medical Certificate or greater.
- Minimum age to issue Private Pilot & Instrument Rating is 17 years.
- Minimum age to issue Commercial Pilot License is 18 years.

From Where Dreams Take Off...

SUPREME AVIATION INC

Sangeeta Aviation Services Pvt Ltd enterprise

5B 34 Mittal Estate MV Road Andheri E Mumbai 59 **INDIA** +91 9870811224
 Potomac Airfield KVKX Fort Washington MD 20744 **USA** +1 214 696 4437
 Supreme Center Natakhtari Airport TBILISI **GEORGIA** +995 57 448 2121
 Av Macaronesia Achada Grande Frente Praia **CAPE VERDE** +238 9919 778
www.supremeaviation.com ammeet@supremeaviation.com



COURSE OUTLINE:



Private Pilot License

Stages	Approximate Duration	Aircraft Recommended
1. Learning your Airplane	3 Days	Cessna 172SP G1000 (3 hours)
2. Improving Control	3 Days	Cessna 172SP G1000 (3 hours)
3. Polishing Takeoffs & Landings	3 Days	Cessna 172SP G1000 (5 hours)
4. Preparing for Solo	4 Days	Cessna 172SP G1000 (6 hours)
5. Getting Ready for Cross Country	3 Days	Cessna 172SP G1000 (5 hours)
6. Flying Cross Country & at Night	6 Days	Cessna 172SP G1000 (13 hours)
7. Preparing for Check Ride	6 Days	Cessna 172SP G1000 (10 hours)
You can be a Private Pilot		in approximately \$10000

Instrument Rating

1. Learning your Instrument Skills	3 Days	Cessna 172SP G1000 (8 hours)
2. Improving Control	3 Days	Cessna 172SP G1000 (8 hours)
3. Navigating on Instruments	4 Days	Cessna 172SP G1000 (8 hours)
4. Flying Instrument Approaches	4 Days	Cessna 172SP G1000 (8 hours)
5. Instrument Cross Country Flying	4 Days	Cessna 172SP G1000 (5 hours)
6. Preparing for Check Ride	10 Days	Cessna 172SP G1000 (3 hours)
You can be an Instrument Pilot		in approximately \$8000

Commercial Pilot License Multi Engine with Single Add On

1. Learning Professional Cross Country and Night Procedures	1 Week	Diamond 20C1 (15 hours)
2. Building Cross Country Experience	2 Weeks	Diamond 20C1 (55 hours)
3. Flying Multi Engine/Complex Airplane	4 Weeks	Piper Seneca (20 Hours)
4. Flying Commercial Maneuvers	½ Week	Cessna 172SP G1000 (5 hours)
5. Preparing for Check Ride	1 Week	Cessna 172SP (25 hours)
6. Achieving the Goal!	½ Week	Cessna 172SP (1.5 hours) Piper Seneca (1.5 Hours)
You are a Commercial Pilot..		in 5 Weeks in approximately \$8000
And ready to fly Multi Engines..		in 4 Weeks in approximately \$7000

From Where Dreams Take Off...

SUPREME AVIATION INC

Sangeeta Aviation Services Pvt Ltd enterprise



5B 34 Mittal Estate MV Road Andheri E Mumbai 59 **INDIA** +91 9870811224
 Potomac Airfield KVKX Fort Washington MD 20744 **USA** +1 214 696 4437
 Supreme Center Natakhtari Airport TBILISI **GEORGIA** +995 57 448 2121
 Av Macaronesia Achada Grande Frente Praia **CAPE VERDE** +238 9919 778
www.supremeaviation.com ammeet@supremeaviation.com



Total Approximate Expenses including known ADDITIONAL EXPENSES

Commercial Pilot Training ME IR, FAA Medicals, Headsets, etc.	<u>Professional Pilot Program I</u> \$36,499
TSA Approval Fees + USA M1 Visa + SEVIS fee	\$390 + \$140 + \$200
Basic Accommodation	\$2400
Documentation & Processing	\$1000
Origin – USA/Tbilisi/SAL - Origin Airfare + Travel Insurance	Unknown / Not Included
Food + Apartment Utilities + Personal Expenses	Unknown / Not Included
Total Known Approximate Price	US\$ 40,629

Payment Procedure

Enrollment / Documentation & Processing Fees	\$1,000
Pre Arrival / First Installment	\$8,000
Second Installment	\$8,000
Third Installment	\$8,000
Fourth Installment	\$8,000
Fifth Installment	\$8,000

- The entire payment for training and accommodation and other formalities is to be made in favor of 'Supreme Aviation' in US\$. Please contact us for information on transfer of funds.
- Candidates can pay the fees as they fly without any advance deposits.
- Prices quoted are based on aircraft rental block rates and policies. Also please refer to the Safety Procedures & Practices and aircraft rental agreement for complete details.
- Commercial Pilot Training cost conditions described with the cost break up.
- Any additional training, flight hours, instructional hours, material purchased shall generate extra costs. Payment shall be additional for such expenses.
- Prices are subject to change without any Prior Notice.
- USA Visa fees as levied by American Consulate.
- SEVIS fee of \$200 as levied by the USCIS.
- Origin – Washington DC/ Tbilisi / SAL - Origin airfare depends on the availability, preferred airline, class of travel and all other norms applied by airline.
- Travel insurance to be arranged by the candidate.
- Basic Accommodation cost includes rent for the apartment (On sharing basis).
- Rent calculated for a maximum of 210 days in the standard accommodation.
- All terms & conditions applicable for Apartment stay provided separately in Apartment Agreement.
- Special Accommodations can be arranged on prior request and payment.
- Cost not calculated by Supreme includes food expenses (Recommended \$4 a day), electric supply (recommended \$1 a day) and other personal expenses including purchase, tourism, damage to person or property and etc.
- Additional Terms and conditions apply. Please request more information on ammeet@supremeaviation.com



From Where Dreams Take Off...